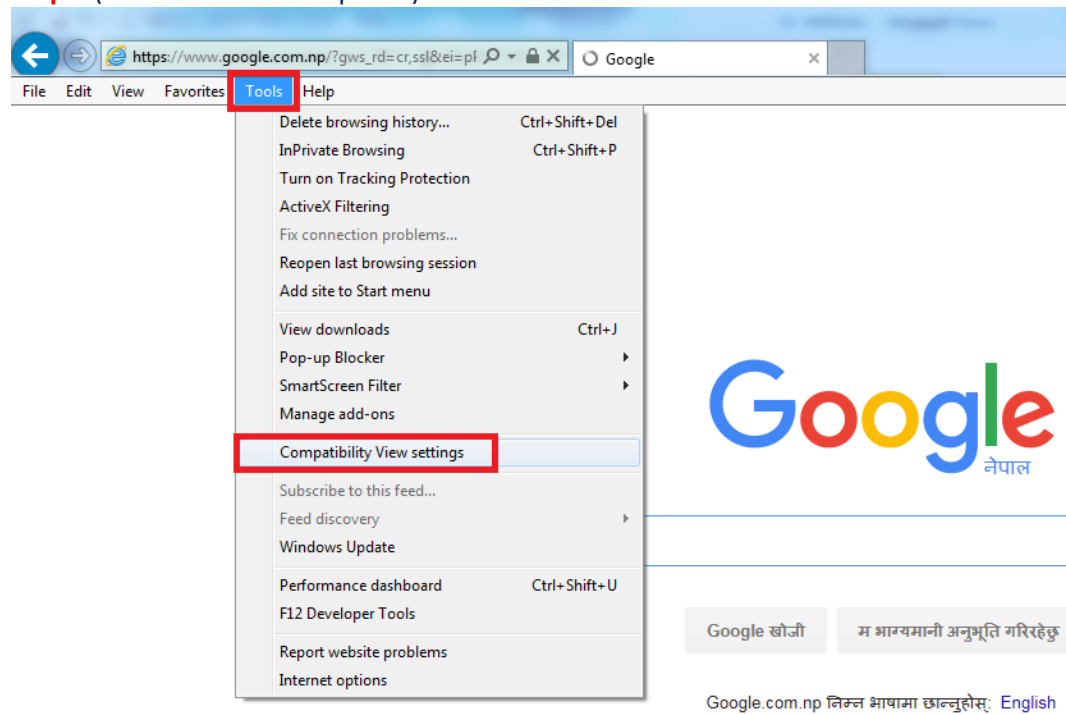


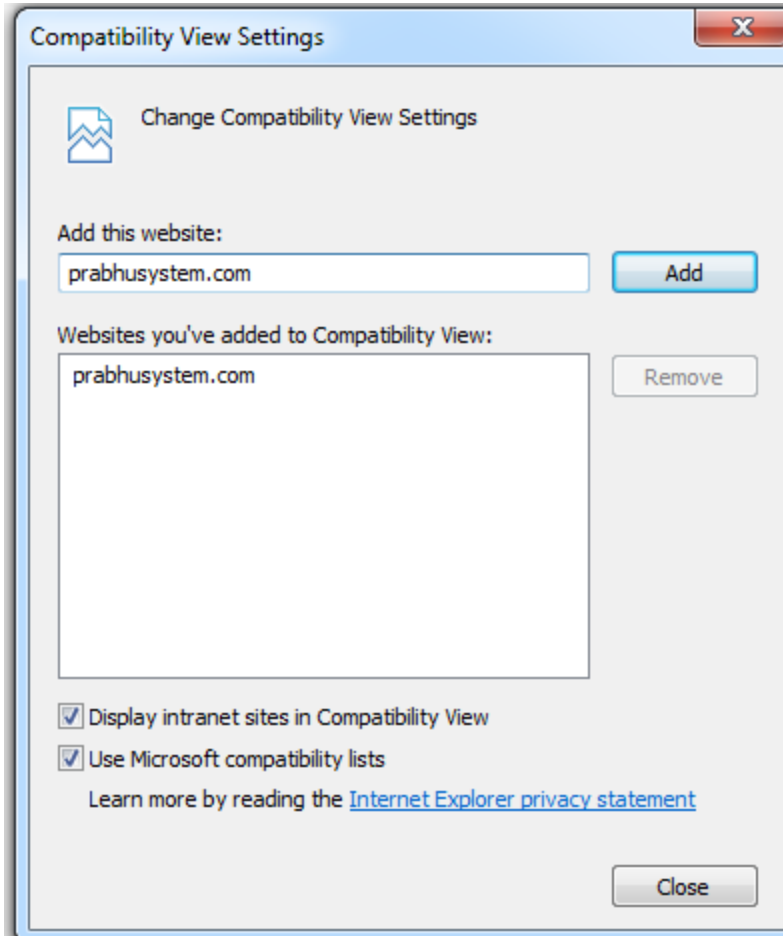
## Precautions

-->Check **Date & Time** of Computer (*It should be current*)

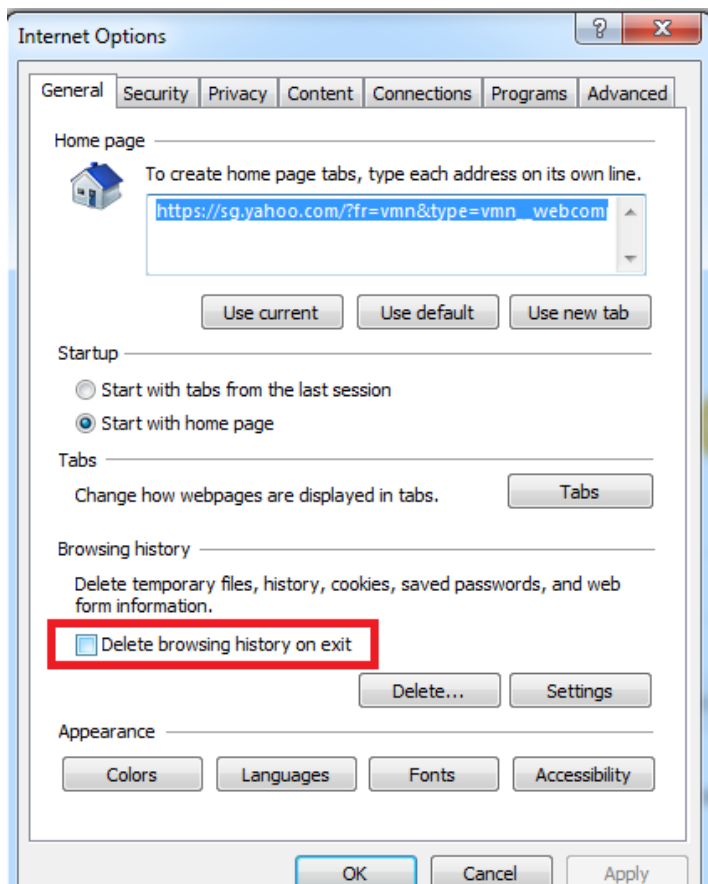
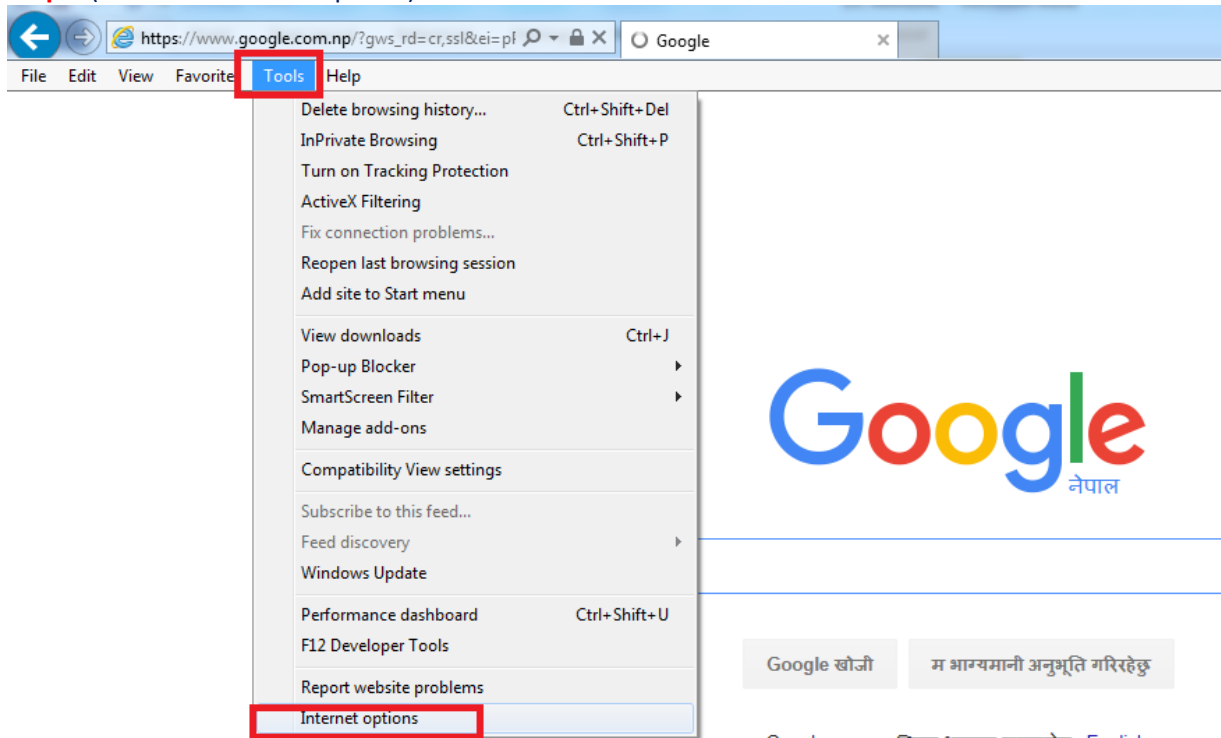
## Step 1 (Must be Internet Explorer)



Add **prbhusystem.com** as below



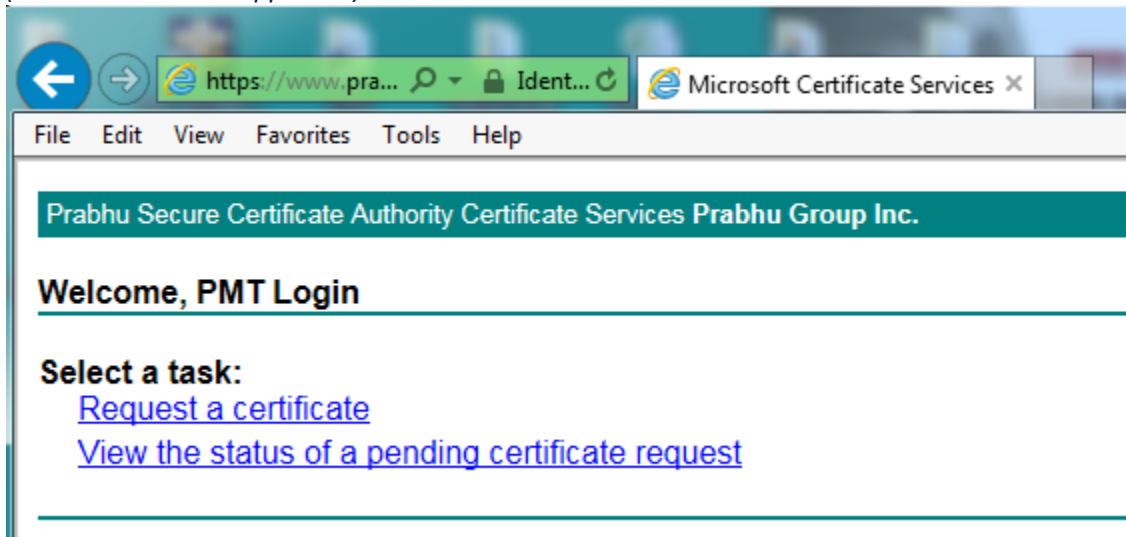
**Step 2 (Must be Internet Explorer)**



**Remove tick mark from Delete browsing history on exit & click in Apply, Ok**

**Step 3** (Must be Internet Explorer)

Open the url: <https://www.prabhusystem.com/certsrv> & login from provided credentials  
(Below screen shall appeared)



Click in **Request a Certificate**

#### Advanced Certificate Request

To complete your certificate, please check your information and Press **Submit** button to request certificate.

If information is not correct please contact **Tel:+1-7186516060, Fax:+1-7186516060** or email:[support\\_it@prabhugroupusa.com](mailto:support_it@prabhugroupusa.com) to update.

#### Identifying Information:

Name: PMT Login (PMTJRF)  
E-Mail:   
License Code: PMT  
Agent: JAPAN REMIT FINANCE CO LTD  
Branch Name: TOKYO  
Access Code: JRN01  
Country/Region:

#### Type of Certificate Needed:

Client Authentication Certificate

#### Key Options:

Create new key set  
CSP: Microsoft Enhanced RSA and AES Cryptographic Provider  
Key Usage:  Exchange  Signature  Both  
Key Size: 2048 (Min: 384 Max:16384 (common key sizes: ))  
 Automatic key container name

#### Additional Options:

Request Format:  CMC  
Hash Algorithm: sha256  
Friendly Name: www.prabhuusa.com

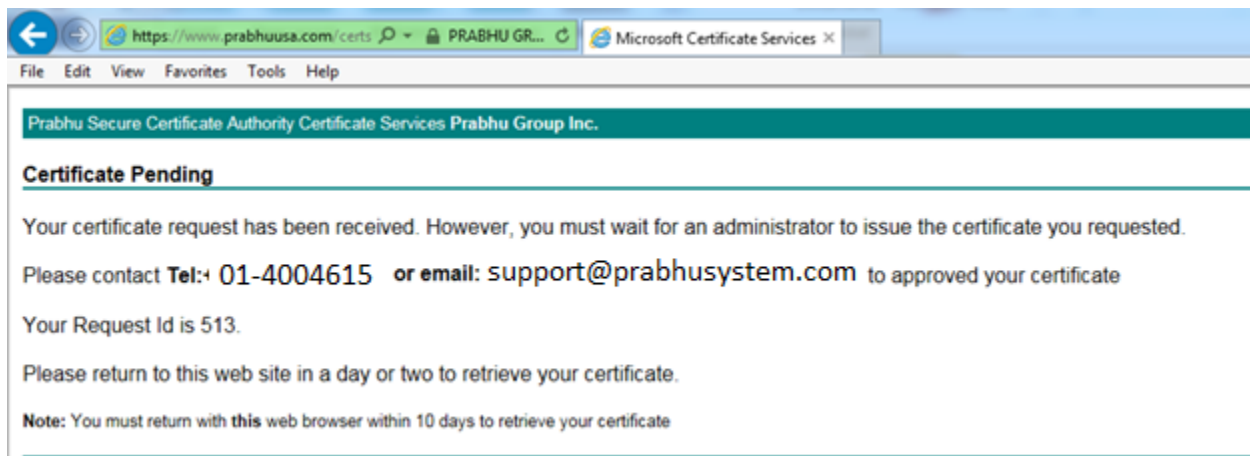
Submit >

Choose **Microsoft Enhanced RSA and AES Cryptographic Provider** CSP

Click in **Submit**

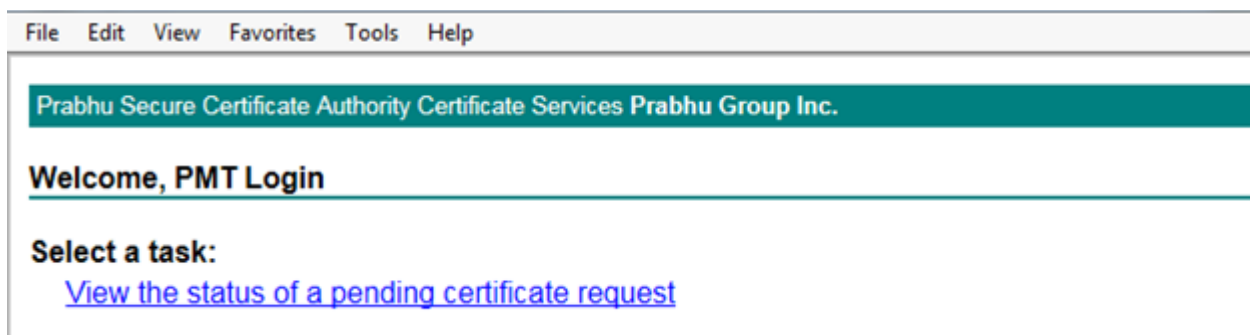
You will see **Request ID**

Send us the mail with **Request ID**



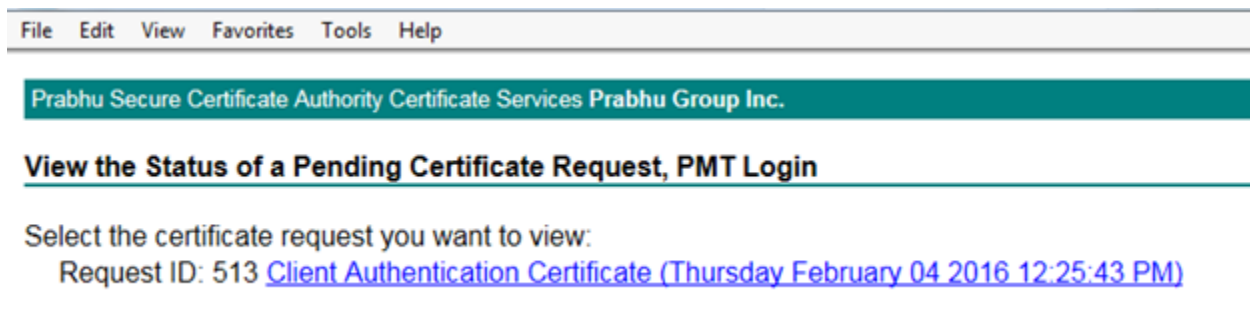
**After Receiving reply from us; login into the system**

<https://www.prabhusystem.com/certSrv>



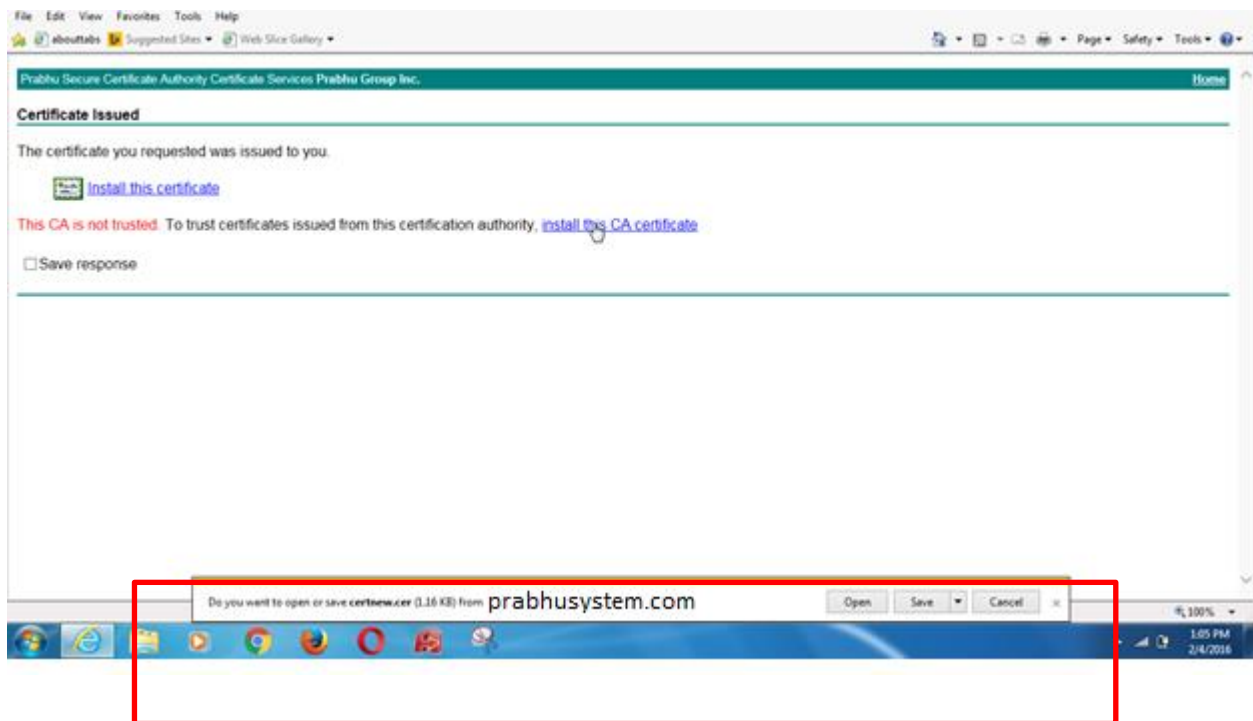
Click in **View the Status of a pending certificate request**

Click in **Client Authentication Certificate.....**

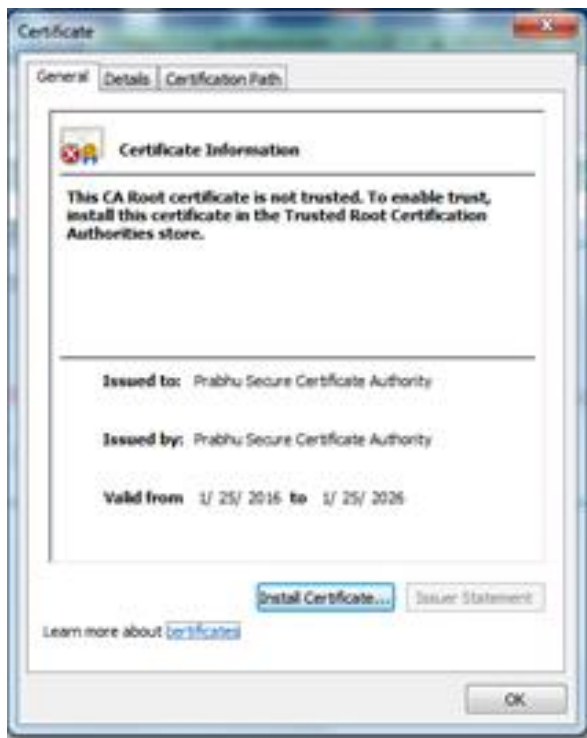


Click in **Install this certificate**

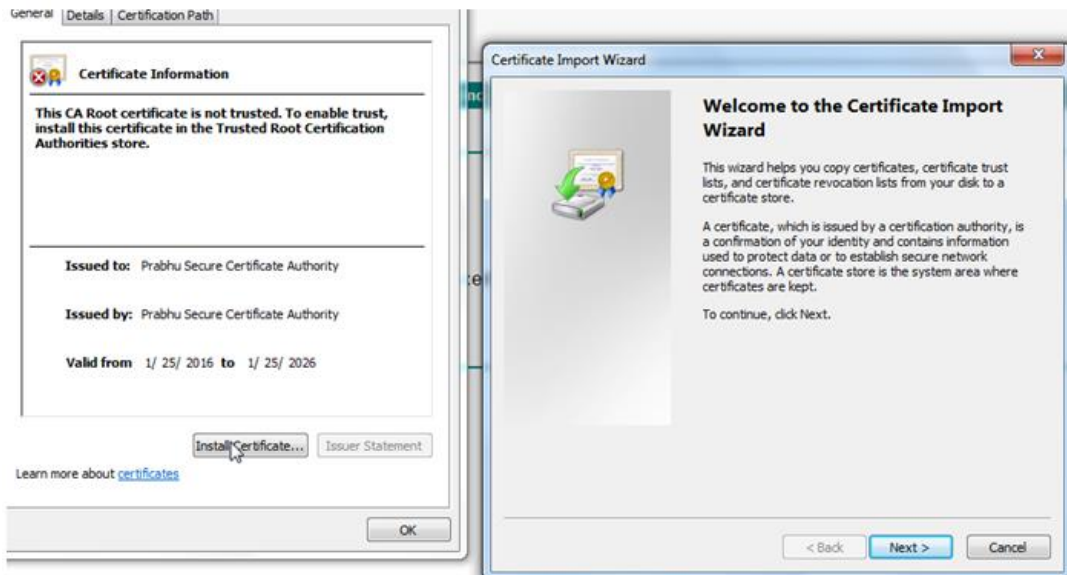
then again Click in **Install this CA certificate**



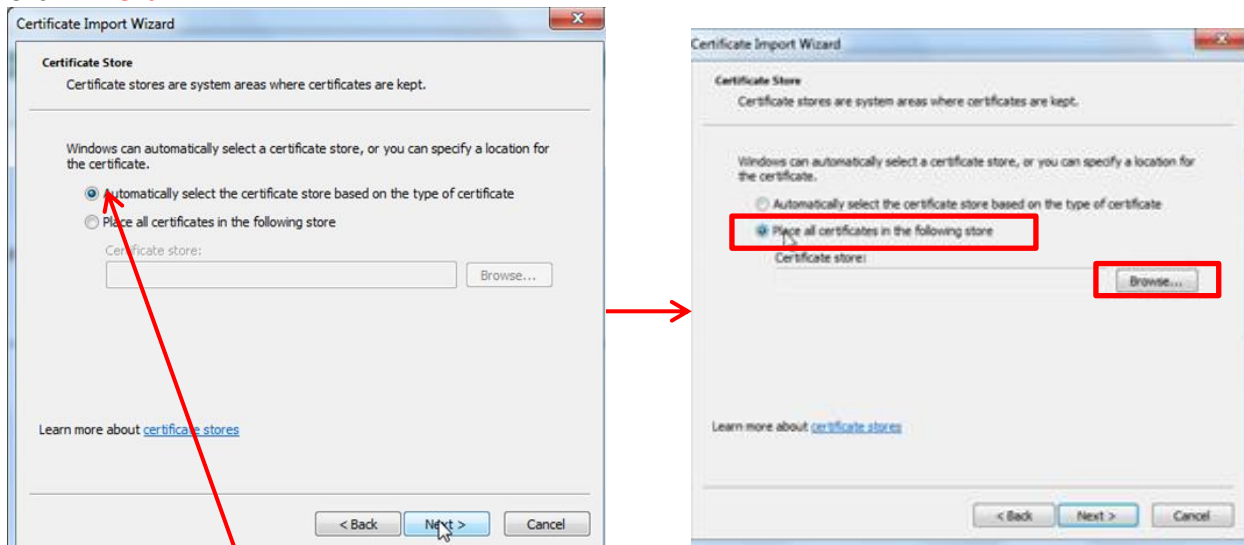
Check bottom of the browser and click in Open



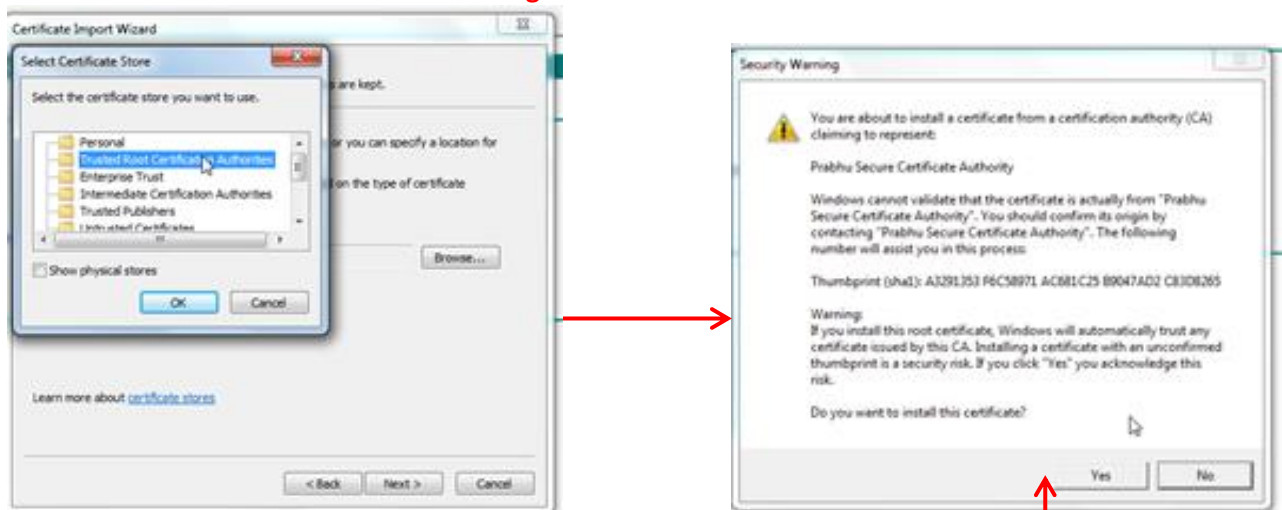
Click in **Install Certificate**



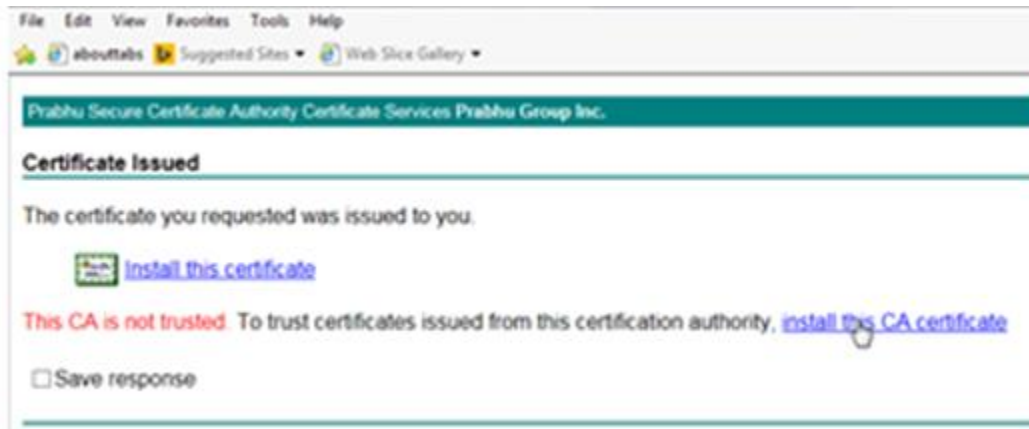
Click in **Next**



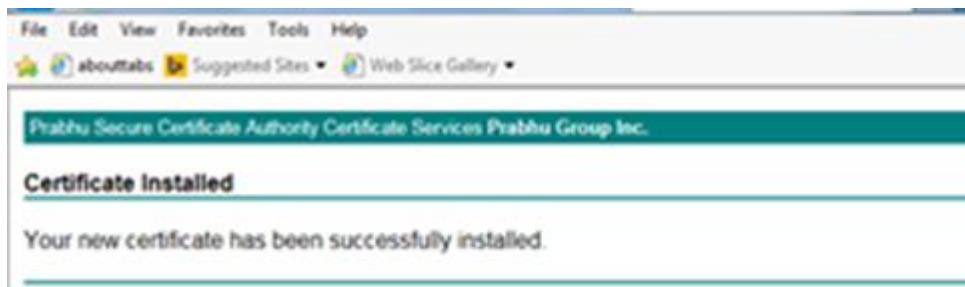
Choose **Place all certificates in the following store** & Click in **Browse**



Choose **Trusted root Certificates Authorities** & Click in **OK** (This is the screenshot of successful placing in correct place)  
Click in **Yes**



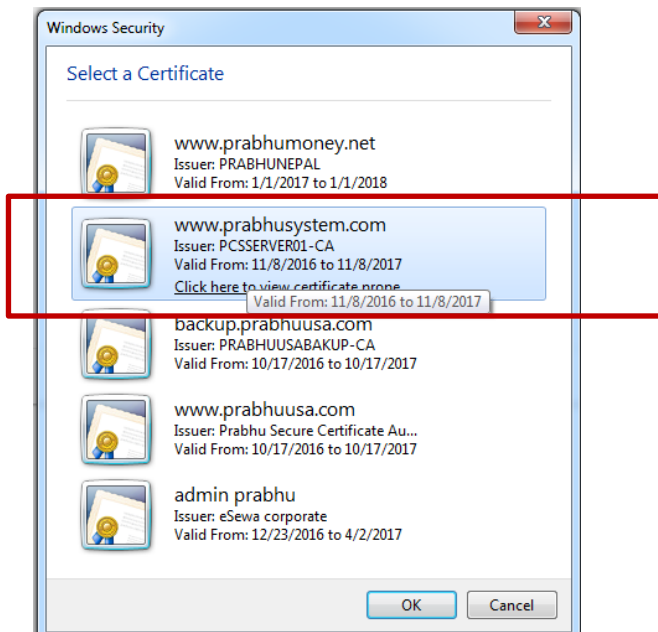
Again Click on **Install this certificate**



Now Certificate has been installed successfully

Close all the Open Browser and open <https://www.prabhusystem.com/agent>

**If you are having multiple certificates; choose the correct one as below:**



**Still issue persists; you need to update your internet explorer from below URL**

[http://hotfixv4.microsoft.com/Windows%20XP/sp4/Fix251294/2600/free/375554\\_ENU\\_i386\\_zip.exe](http://hotfixv4.microsoft.com/Windows%20XP/sp4/Fix251294/2600/free/375554_ENU_i386_zip.exe)

After Update; restart the Computer & repeat the step from above.